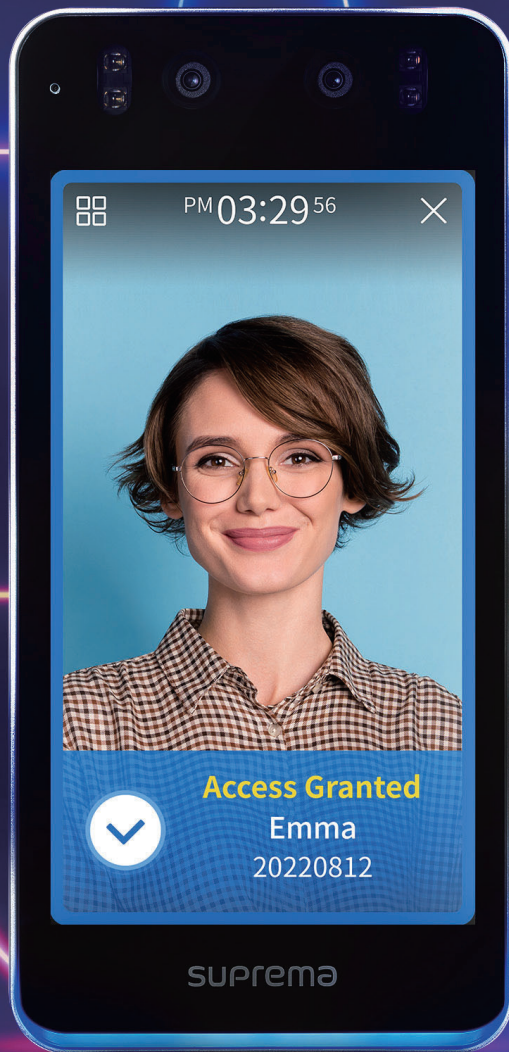
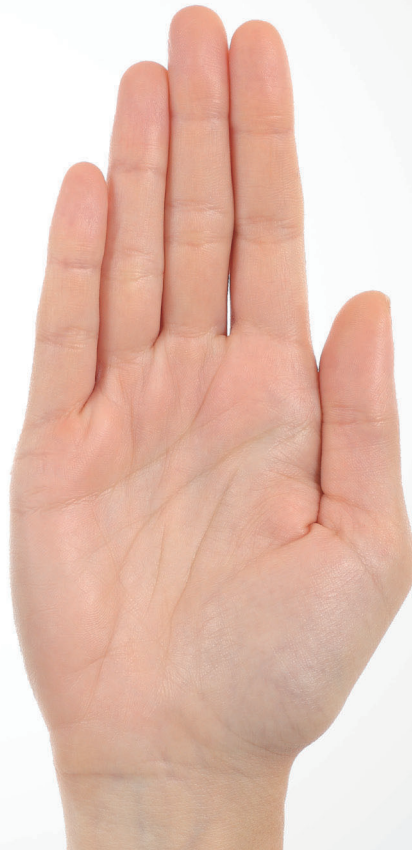


BioStation 3

The New Door Access Experience



SUPrema
SECURITY & BIOMETRICS



Overview

BioStation 3 sets a new standard in access control, providing a new door access experience that enables improved security across all doors, for organizations of all sizes. This terminal is smaller than previous model, yet it has the largest variety of features.

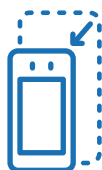
With highly advanced facial recognition, access credentials and usability features, BioStation 3 makes it easier than ever to safely, securely and conveniently protect an organization's physical security and users' personal data.



Multiple Contactless
Credentials



Safely Protect Users'
Personal Data



47% Reduction in Size and
Simple Installation



Connect Anytime and
Anywhere with VoIP Intercom



Multiple Contactless Access Methods

BioStation 3 provides multiple credential options. Choose from the most convenient authentication methods — all contactless and perfectly compatible with a post-pandemic world.

Facial Recognition



Mobile Access



QR and Barcode*

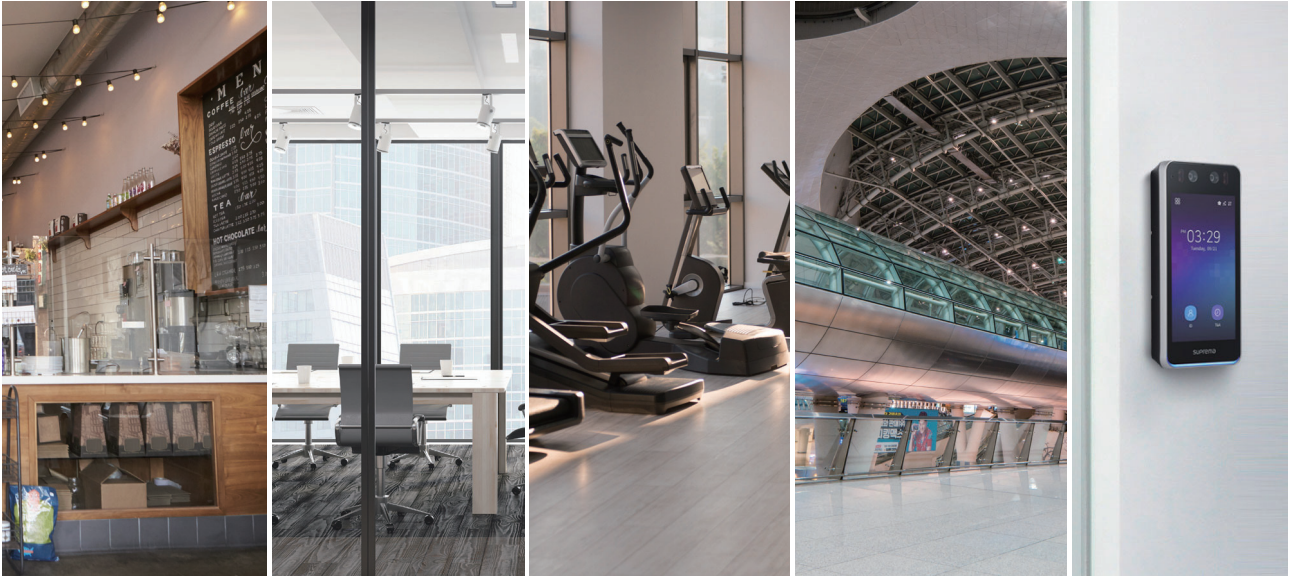
*Available by the end of 2022



RFID Card

Perfect for Any Door, Any Business

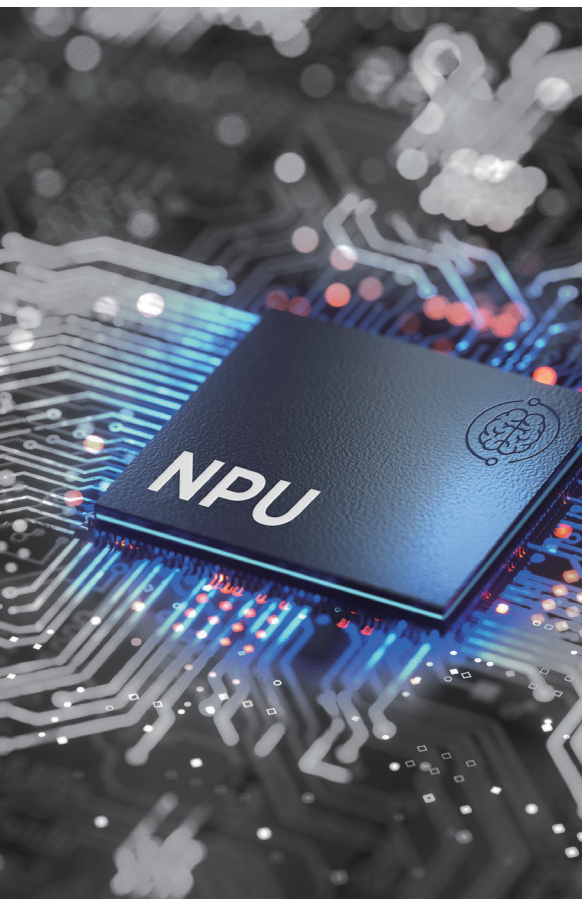
BioStation 3 is easy to install and scale in any environment, from small offices to massive enterprise buildings. It features a 47% size reduction compared to Suprema's previous bestselling facial recognition terminal, FaceStation F2.



- Slim and compact design
- Less wiring and quick installation through Wi-Fi and POE+ support
- Simple to add on new features via custom USB host connecting to SIM Slot, RS232, etc.
- Suitable for indoor and outdoor environments — the terminal is rated IP65 and IK06*

*Refer to the installation guide for details

Fast and Smart AI Optimized for Facial Recognition Access



Suprema took its facial recognition technology to the next level. BioStation 3 is a high-tech edge device that can run AI algorithm locally. It uses an NPU, or Neural Processing Unit, to maximize the performance of its AI engine. Combined with Suprema's domain knowledge and experience as a two-decade access control leader, BioStation 3's NPU-optimized AI algorithm offers the highest standards in facial recognition accuracy and speed.



Accurately and rapidly recognize moving faces in high-traffic areas



Use dynamic face templates to increase matching performance with faces wearing masks, glasses, hats, beards, different hairstyles, etc.



Detect fake faces, images and photos

The Highest Level of Privacy Protection

BioStation 3 takes data protection very seriously.

- ISO/IEC 27001 certified to protect privacy and biometric data
- Designed to comply with GDPR, one of the strictest privacy regulations
- Embedded with Secure Element(SE) to prevent cyber-attacks
- Completed penetration testing through a verified institution
- Provided with 'Face Template on Mobile'* credential

*Available by the end of 2022



What is 'Face Template on Mobile'?

– Own Your Own Data

Suprema's exclusive authentication method 'Face Template on Mobile' lets users enroll into an access control system and store their face profile directly on their own mobile devices. This gives the users complete control over their own ID and their privacy. Users' biometric data is not stored in company databases.

Easily Connect Across All Access Points

BioStation 3 enables integrated management over an entire access control system.

- Communicate seamlessly with all doors via VoIP Intercom
- Enable video monitoring via RTSP(Real Time Streaming Protocol)



Specifications

Model Name			BS3-DB	BS3-APWB
Capacity	Users	1:1	100,000	
		1:N(Face)	50,000	
	Log	Text	5,000,000	
		Image	50,000	
Credential	Face	-	2 per User	
		Duration	≤ 0.3s	
		Height	1.4m ~ 1.9m	
		Distance	0.6m ~ 1.0m	
	RFID	EM, MIFARE, MIFARE Plus, DESFire EV1/EV2, FeliCa		
		-	iCLASS SE/SR/Seos, HID Prox	
	Mobile Card	NFC (Android) BLE (Android, iOS)		
Barcode and QR code	Supported			
HW	CPU		1.5GHz Quad (2.0Tops)	
	Memory		4GB RAM, 32GB Flash	
	OS		Linux	
	LCD		5.5" IPS, 720 x 1280	
	Camera	-	2MP x 2EA (Visual, IR)	
		IR LED	Supported	
	Status LED		Supported	
	Sound		16bit	
	Ingress Protection (IP)		IP65	
	Vandal Proof (IK)		IK06	
	Temperature	Operating	-20°C ~ 50°C	
		Storage	-40°C ~ 70°C	
	Humidity	Operating	0%-80%	
		Storage	0%-90%	
	Dimension (WxHxD, mm)		82.5mm x 171mm x 23.4mm	
	Tamper		Supported	
	Power		DC12V 2.5A, DC24V 1.2A	
Interface	Ethernet		10/100/1000 Mbps, auto MID/MID-X	
	Wi-Fi		-	802.11 b/g/n
	RS-485		1ch Host or Slave (Selectable)	
	Wiegand		1ch Input and 1ch Output	
	TTL		3ch Inputs	
	Relay		1 Relay	
	USB Host		USB 2.0 (Type C)	
	PoE+		-	Supported (IEEE 802.3 at compliant)
	Intercom		Supported	
	Extended USB		Supported	
Certificate	Certificates		CE, FCC, KC, RoHS, REACH, WEEE, UKCA, RCM	



Suprema Inc.

17F Parkview Tower, 248, Jeongjail-ro, Bundang-gu, Seongnam-si, Gyeonggi-do, 13554, Republic of Korea

T +82 31 783 4502 www.supremainc.com



For more information visit our website below by scanning the QR code.

<https://www.supremainc.com/en/about/contact-us.asp>